



# **hush.**

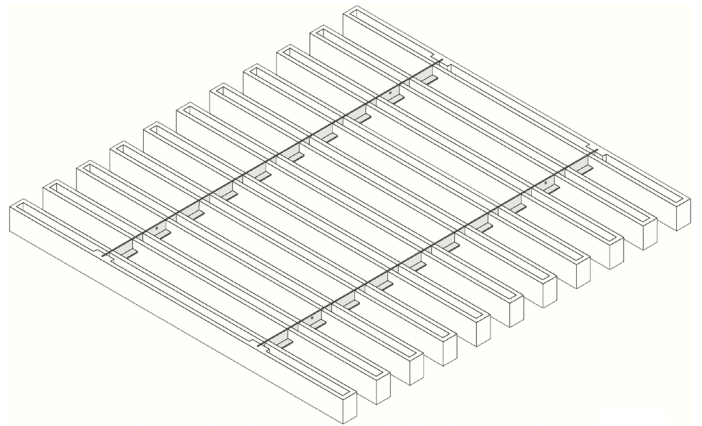
Install Guide  
Beams

*Quiet by design*

Installation methods on this guide:

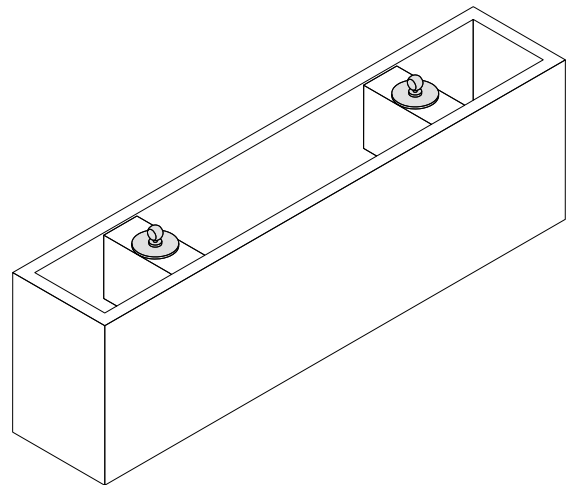
# T-Track

Pages 1-2



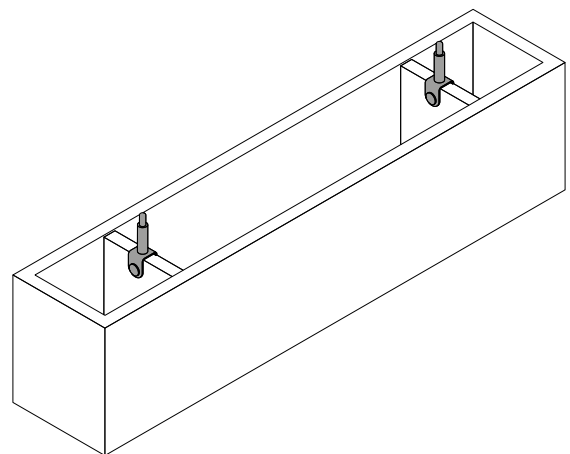
# Flush Mount

Pages 3



# Individual Suspension

Pages 4-5

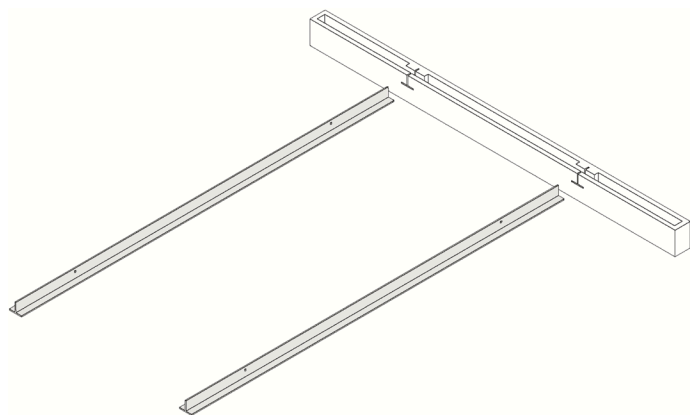


- Prior to installation, installers are advised to unpack and lay out panels to determine the most aesthetically pleasing arrangement of panels.

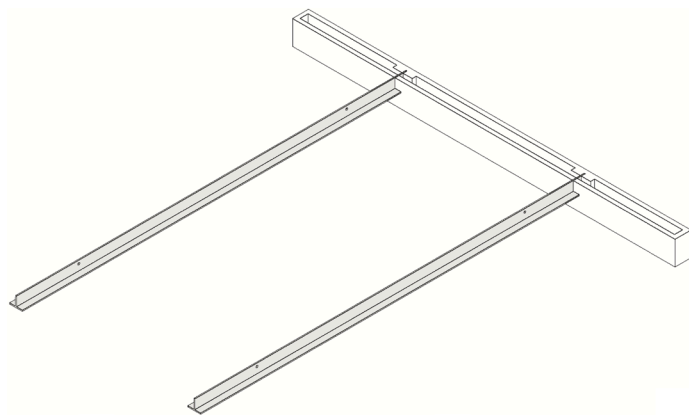
## T-track

1. Locate the 'End Cap Beams' (they can be identified by the built-up block on the inside) and the aluminum 'T-track'.

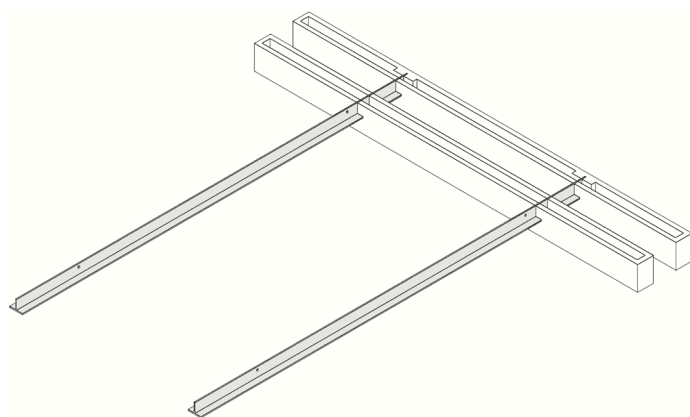
*(Note; the top of the baffle will have small holes cut out for the installation hardware).*



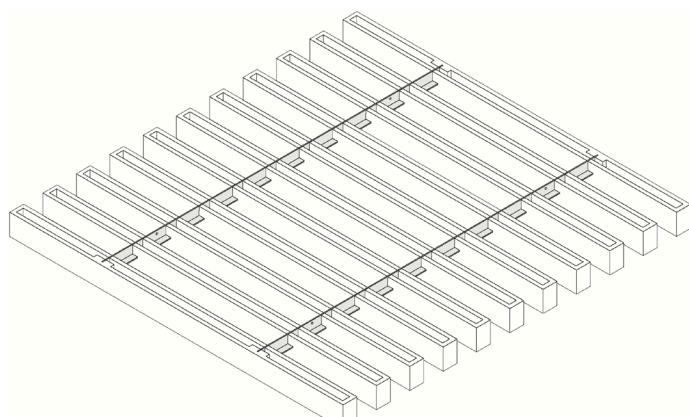
2. Insert the aluminum T-track into the End Cap Beam as shown below:



3. Now slide on the intermediate Beams (in numerical order if noted on the Beams ), spacing the Beams using spacing tool provided.

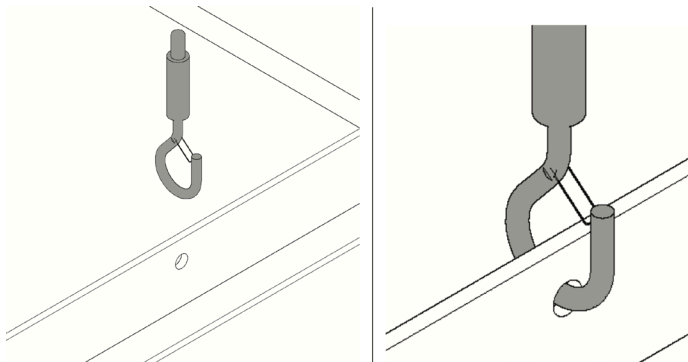


4. Add remaining Beams, ending with a Beam End Cap.



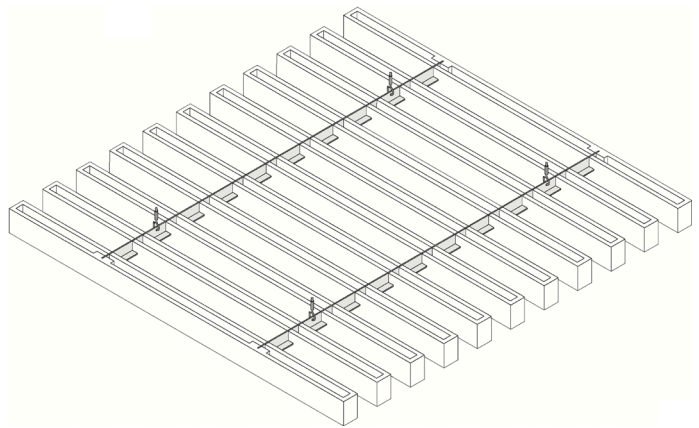
- 5. Next, attach the 'Clevis-Hook' onto the T-track in the pre-drilled holes.**

*(Ensure that the spring-loaded safety clip is in the closed position once the hardware is attached).*



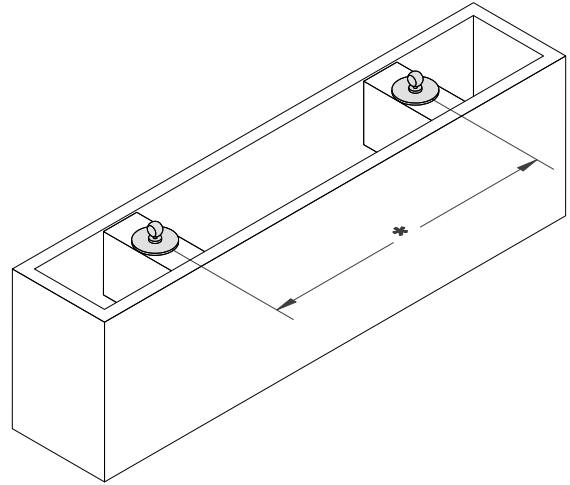
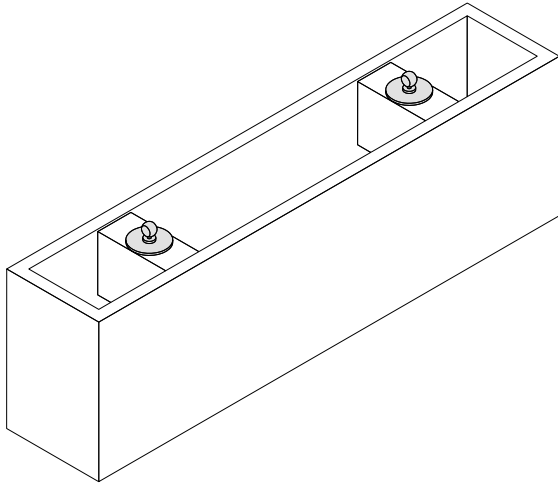
- 6. When all Clevis-Hooks have been installed, your Linear Beam is now complete and ready to be suspended from the ceiling.**

*(Please refer to the 'Ceiling Hardware Install Guide' for the final steps).*

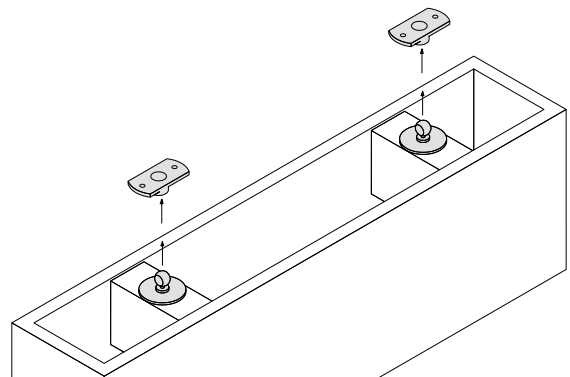
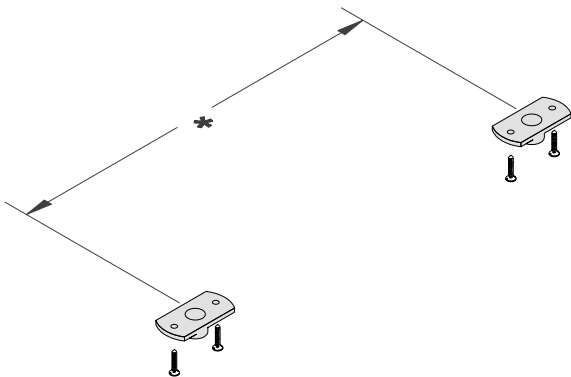


## Flush Mount

1. Place the Beam face down on a clean surface.
2. Measure the center-to-center dimension between the two male hardware clips. Once all brackets are secured align it with the clip already attached to the column.



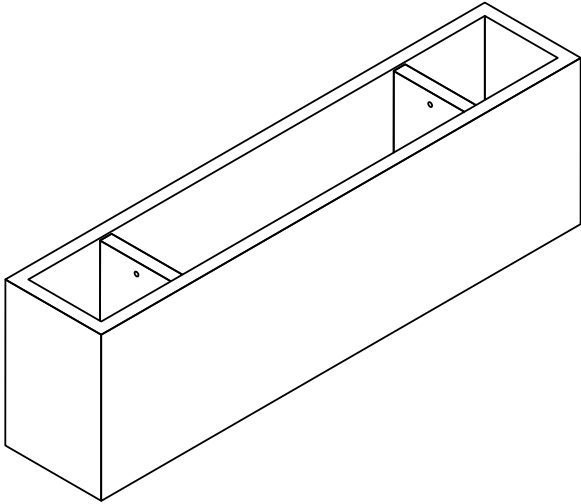
3. Mount the female portion of the clips onto the ceiling, using screws to suite your ceiling material. Ensure that the center-to-center location of the female clips match the Beam hardware dimensions.
4. Now, push the Beam onto the hardware mounted on the ceiling, the Beam hardware will 'click' into the ceiling hardware. Your Beam install is complete.



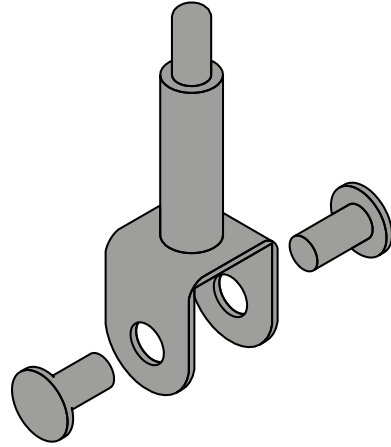
# Individual Suspension

## 1. Locate the Linear Beam.

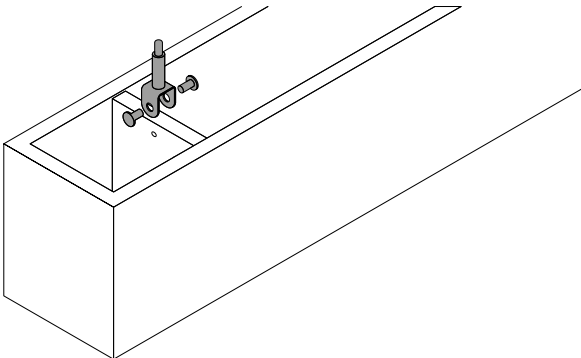
*(Note; the top of the beam will have small holes cut out for the installation hardware).*



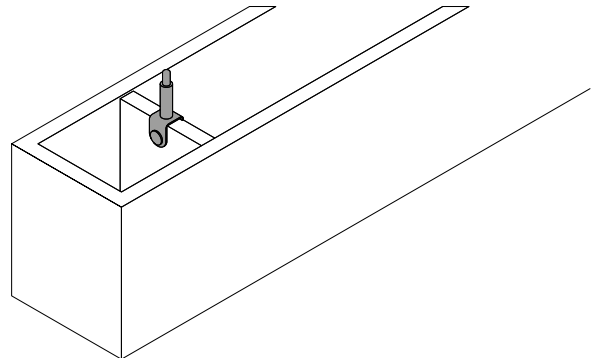
## 2. Locate the Shoulder-bracket hardware provided.



## 3. Align the Shoulder-brackets with the small cut out holes on the Linear Beam.



## 4. Now tighten the bolt hardware.





5. When all Shoulder-brackets have been installed, your Linear Beam is now complete and ready to be suspended from the ceiling.

*(Please refer to the 'Ceiling Hardware Install Guide' for the final steps).*

