

hush.

Essential Guide

Color Match Protocol

Quiet by Design

Overview

Thank you for choosing Hush Acoustics for your acoustic panel needs, we appreciate your partnership and will take good care of your project.

Before we proceed with printing your colors, we kindly ask you to acknowledge the following document.

In order to provide you with the best printed results for panels, murals, and other acoustic products, we have implemented the protocol listed below, this aims to help designers and other creatives to check if your project meets the minimum requirements before sending it for production.

For a cornerstone of exceptional printing quality, ensuring every detail shines through with unparalleled clarity and precision, we require a physical reference sample to be sent to Hush's office.

Our printed panels can capture the richness of colors, the subtlety of gradients, and the fine nuances of textures, delivering a visual feast for the eyes in addition to acoustic properties.



Tailored Colors & Textures

Whether used for panels, murals, or other purposes, Hush Acoustics' felt Color Match services add a delightful dimension to the visual and tactile experience.

Our felt offers a unique and tactile way to bring designs to life, adding a touch of uniqueness and sophistication to various projects.

We are equipped with innovative high-end equipments capable of producing very accurate colors and sharp high resolution, perfect to make your projects become the highlight even more, in a myriad of possibilities!

The results presents the richness of colors, the subtlety of gradients, and the fine nuances of textures, delivering a visual feast for the eyes in addition to acoustic properties.

All color matches are coordinated by our Senior Graphic Designer, who follows closely the process, ensuring the final results gets as close as possible to the reference sent by the Interior Designer/Architect.

Commonly Matched Materials (matte finishes only)

Wall Paints

Dulux, Benjamin Moore, Behr, and other popular brands

Fabric

From linen to wool, we match not just the color, but also the texture in most of the cases

Wood Laminates

WilsonArt® and other popular brands

Pantone® Hues

We simulate your company's brand tones using the Pantone® Uncoated palette

Stones

We can simulate a wide variety of stone types based on your needs

Generic Textures

Get in touch with our Acoustic Specialists, we will be glad to assist you

*Our acoustic felt has a soft and fibrous touch, it comes with a natural texture, and absorbs ink differently compared to traditional paper, resulting in a distinctively high-quality **matte** finish. We use Pantone® Uncoated color palette for brand-specific color matches.*

Wall Paint

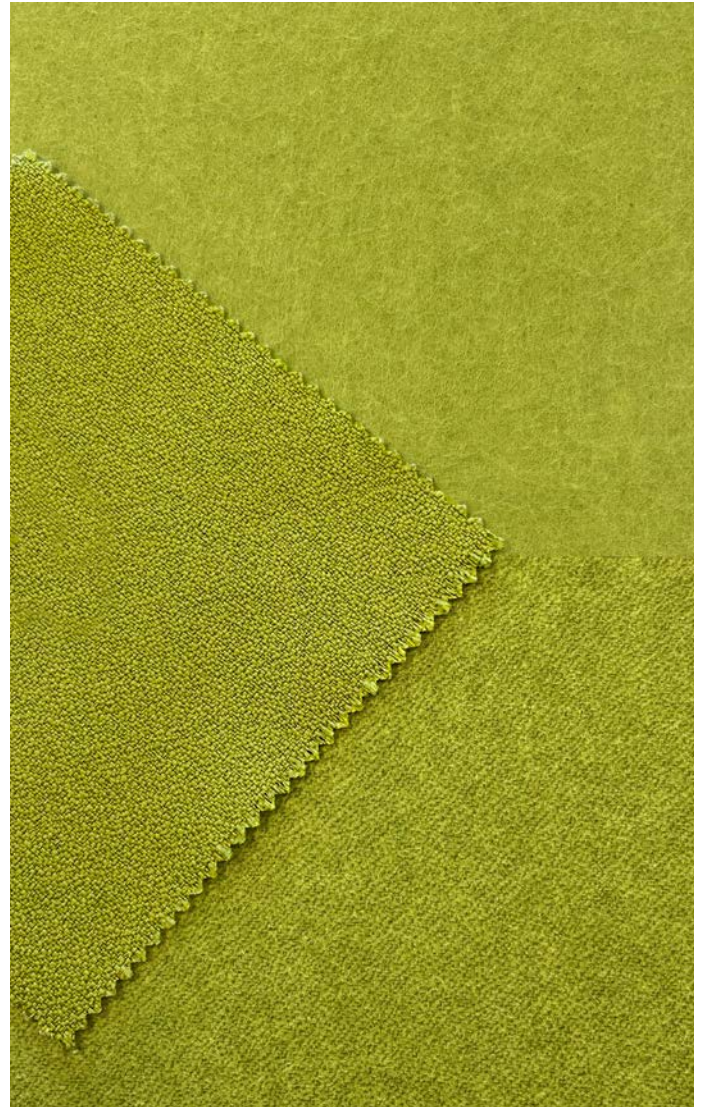


Dulux Neptune Blue DLX1237-7

Mak Interiors required precise color customization for their design, involving a specific Dulux blue. Hush Acoustics achieved this by expertly matching the color to integrate seamlessly with existing millwork.

The matte finish on both materials enhanced the blend, and Bold panels were modified with varying dimensions and white lettering, without backlighting, for visual impact.

Fabric



Guilford of Maine · Anchorage

This project required a blend of fabric and felt for the overall visual effect. Hush Acoustics was able to match not only the green hue but also the texture of the fabric, resulting in a more realistic outcome.

The color-matched felt panel was used on beautiful clouds, merging perfectly with the environment where it was installed.

Instructions/Conditions

- The P.E.T. felt Hush Acoustics uses absorbs the dying ink differently from other surfaces such as paper.
- Please be advised that proprietary textures must be respected, and we will not replicated those owned by competitors. While we can achieve closely comparable textures and colors, we will not use the exact same base material if it originates from another felt manufacturer.
- We provide wood grain color matching and make every effort to closely replicate the grain pattern; however, certain limitations may apply.
- Minimum size for wood grain match reference sample is 5x5in for color/tone match, and 12x12in for grain match.
- A physical reference sample is required to be sent to Hush's office (att. Design team) in order to achieve a closer color match.
- Hush requires written permission from the copyright holder in order to reproduce any copyrighted work. Professional photographs cannot be reproduced without written permission from the photographer.
- Matte finished only (Pantone® Uncoated).

