



# **hush.**

Install Guide

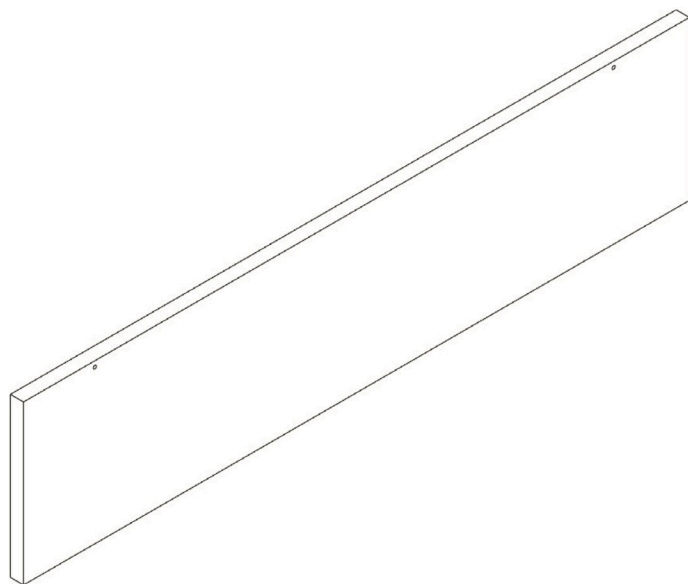
Fin

*Quiet by design*

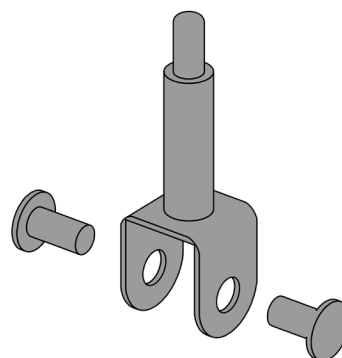
- Prior to installation, installers are advised to unpack and lay out panels to determine the most aesthetically pleasing arrangement of panels.

### 1. Locate the Fin Baffle.

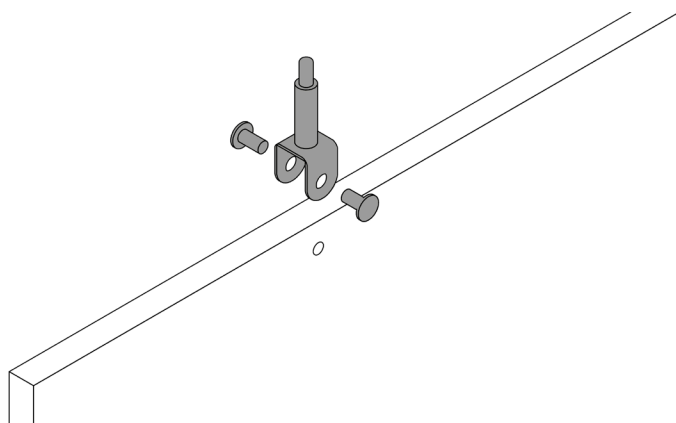
*(Note; the top of the baffle will have small holes cut out for the installation hardware)..*



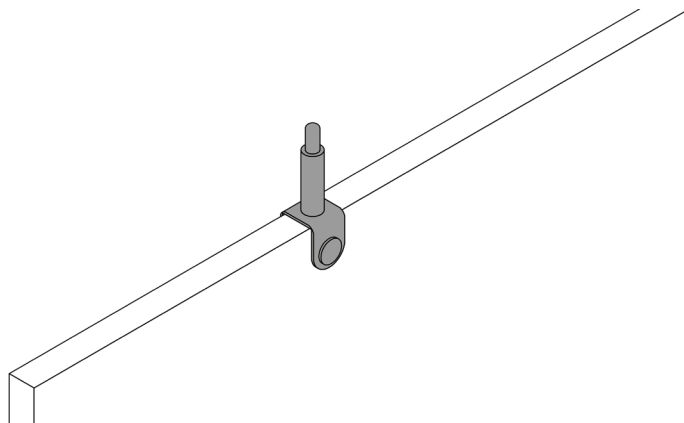
### 2. Locate the Shoulder-bracket hardware provided.



### 3. Align the Shoulder-brackets with the small cut out holes on the baffle.



### 4. Now tighten the bolt hardware.



5. When all Shoulder-brackets have been installed, your Fin Baffle is now complete and ready to be suspended from the ceiling.

*(Please refer to the 'Ceiling Hardware Install Guide' for the final steps).*

