



hush.

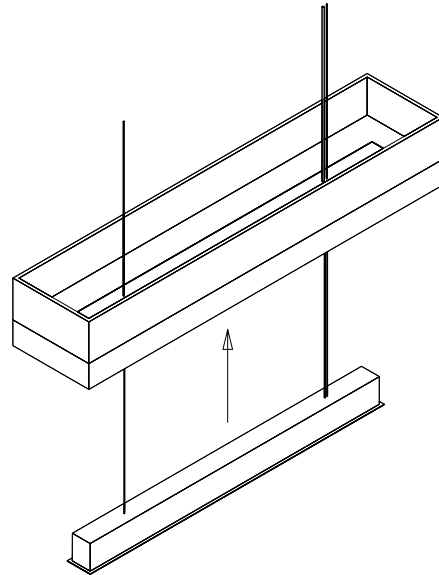
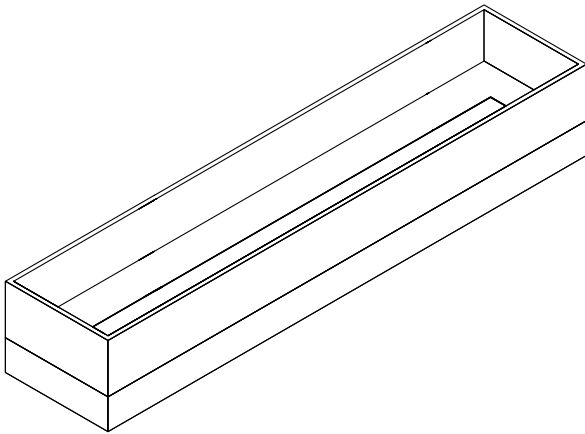
Install Guide
Fusion

Quiet by design

- Prior to installation, installers are advised to unpack and lay out panels to determine the most aesthetically pleasing arrangement of panels.

Individual Suspension

1. Locate Fusion with the cut-out on the underside. The size of the cut-out will be the same size as the body of the LED light unit.
2. Insert the LED light unit into the underside of Fusion. Now secure the hardware to the ceiling at your desired height, please refer to the Ceiling Hardware guide.



3. Now, have a certified electrician connect the LED light to the power source, according to electrical codes and standards required for your region. Once the electrical connection is complete, your Fusion is complete and ready for use.

